

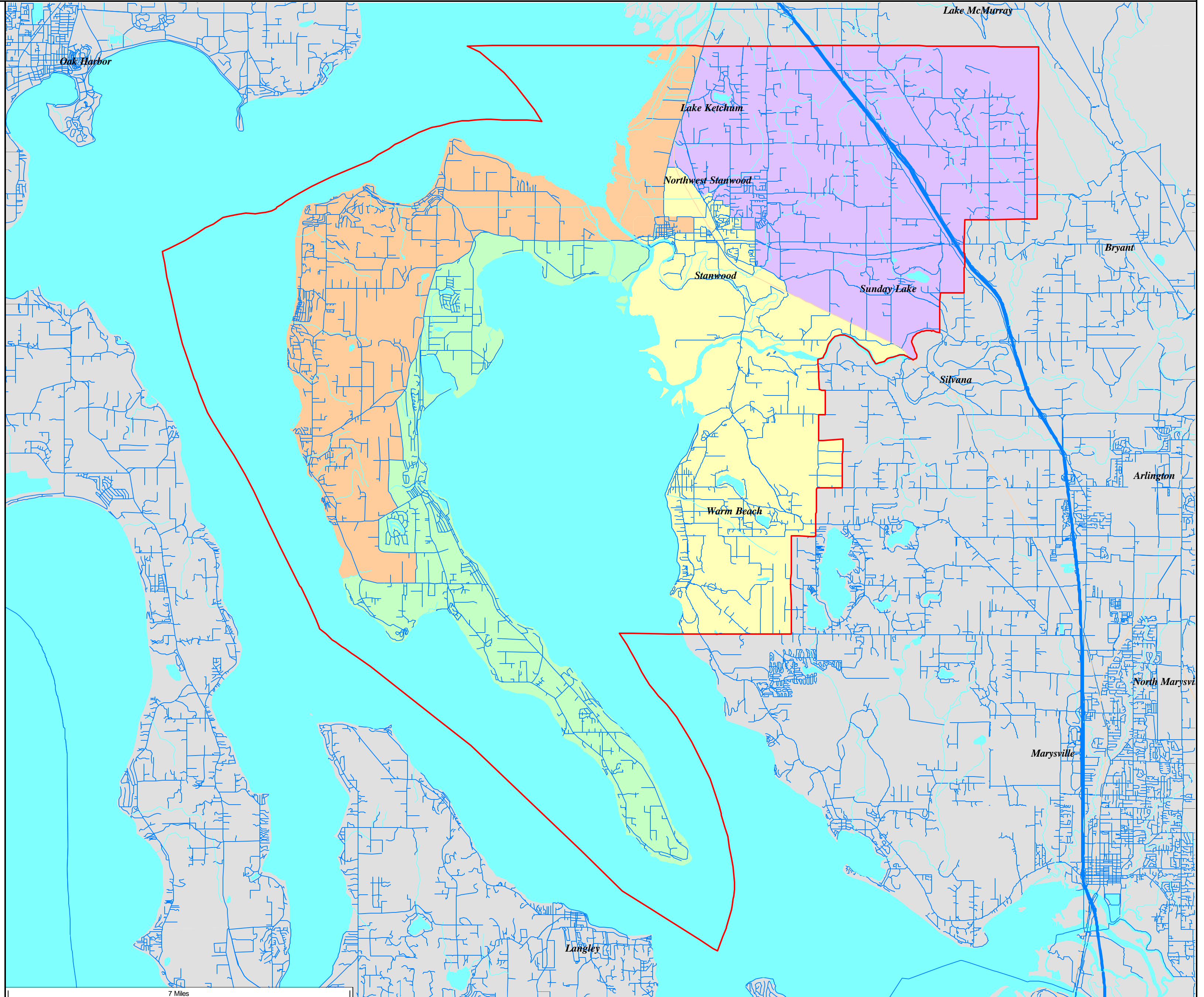
Stanwood-Camano School District

Current Board of Director Districts based on Census 2010 Geography

Current Board Districts as Approximated Using Census 2010 Geography

- 1st District
- 2nd District
- 3rd District
- 4th District

District Outline



Stanwood-Camano School District Legal Description – Director Districts

Director District 1

Starting at the intersection of 102nd Ave NW and 271st St NW. East along 271st St NW to 92nd Ave NW. North on 92nd Ave NW to 276th St NW. West on 276th St NW to Old Pacific Hwy. North on Old Pacific Hwy to 292nd St NW. East 292nd St NW to Logan Rd. Southeast on Logan Rd to Pioneer Hwy. Southeast on Pioneer Hwy to Douglas Slou. Northeast on Douglas Slou to extension of Knutson Rd. Southeast on Knutson Rd to Nordic Way. Southerly on Nordic Way to 282nd St NW. East on 282nd St NW to 82nd Dr NW. South on 82nd Dr NW to 280th St NW. East on 280th St NW to 80th Ave NW. South on 80th Ave NW to 276th St NW. East on 276th St NW to 76th Dr NW. South on 76th Dr NW to 272nd St NW. East on 272nd St NW to 72nd Ave NW. South on 72nd Ave NW to Pioneer Highway. Southeast on Pioneer Highway to Miller Rd. Southeast on Miller Rd to BNSF RR. Southeast on BNSF RR to the eastern crossing of school district outline. Clockwise following the school district outline to Port Susan. Northerly through Port Susan to South Pass. Northerly though South Pass to State Hwy 532. East on State Hwy 532 to 102nd Ave NW. North on 102nd Ave NW to the point of the beginning.

Director District 2

Starting at the intersection of W Monticello Dr and W Dry Lake Rd. South and East on Dry Lake Rd to Forest Hill Rd. South on Forest Hill Rd to West Camano Dr. West on W Camano Dr to unnamed creek and Census block closure line in the eastern part of Township 31, 02 E , Sec 26. Westerly following unnamed creek to Puget Sound and western school district boundary line. Counterclockwise following the school district boundary line to Port Susan. Northerly through Port Susan to South Pass. Northerly though South Pass to State Hwy 532. West on State Hwy 532 to NE Camano Dr. Southwesterly on NE Camano Dr to Lindsay Rd. Southerly on Lindsay Rd to S Camano Hill Rd. Southwest on S Camano Hill Rd to Michael Way. South on Michael Way to Solar Way. West on Solar Way to Lawson Rd. South on Lawson Rd to W Monticello Dr. Southwest on W Monticello Dr to the point of the beginning.

Director District 3

Starting at the intersection of Old Pacific Hwy and 276th St NW. East on 276th St NW to 92nd Ave NW. South on 92nd Ave NW to 271st St NW. West on 271st St NW to 102nd Ave NW. South on 102nd Ave to State HWY 532. West on State Hwy 532 to NE Camano Dr. Southwesterly on NE Camano Dr to Lindsay Rd. Southerly on Lindsay Rd to S Camano

Hill Rd. Southwest on S Camano Hill Rd to Michael Way. South on Michael Way to Solar Way. West on Solar Way to Lawson Rd. South on Lawson Rd to W Monticello Dr. Southwest on W Monticello Dr to W Dry Lake Rd. South and East on W Dry Lake Rd to Forest Hill Rd. South on Forest Hill Rd to West Camano Dr. West on W Camano Dr to unnamed creek and Census block closure line in the eastern part of Township 31, 02 E , Sec 26. Westerly following unnamed creek to Puget Sound and western school district boundary line. Clockwise following the school district boundary line to Northern crossing of Pioneer Hwy. Southerly following the Pioneer Hwy to Old Pacific Hwy. Southerly following Old Pacific Hwy to the point of the beginning.

Director District 4

Starting at the intersection of Old Pacific Hwy and 292nd St NW. East 292nd St NW to Logan Rd. Southeast on Logan Rd to Pioneer Hwy. Southeast on Pioneer Hwy to Douglas Slou. Northeast on Douglas Slou to extension of Knutson Rd. Southeast on Knutson Rd to Nordic Way. Southerly on Nordic Way to 282nd St NW. East on 282nd St NW to 82nd Dr NW. South on 82nd Dr NW to 280th St NW. East on 280th St NW to 80th Ave NW. South on 80th Ave NW to 276th St NW. East on 276th St NW to 76th Dr NW. South on 76th Dr NW to 272nd St NW. East on 272nd St NW to 72nd Ave NW. South on 72nd Ave NW to Pioneer Highway. Southeast on Pioneer Highway to Miller Rd. Southeast on Miller Rd to BNSF RR. Southeast on BNSF RR to the eastern crossing of school district outline. Counterclockwise following the school district outline to Pioneer Hwy.. Southerly following the Pioneer Hwy to Old Pacific Hwy. Southerly following Old Pacific Hwy to the point of the beginning.

Director District 5

“At Large”